



Televes reserves the right to modify the product

## Passive optical receiver, with WDM 1310/1490/1550nm

Passive receiver that captures an optical signal on a single fiber (1310/1490/1550nm), and demultiplexes it (WDM). The TV signal (1550nm) is converted to an RF output (54-2400MHz), while the 1310/1490nm wavelengths are destined to data signals (GPON) to distribute them through its optical port.

Ideal for applications FTTH/FTTR and as a RF Overlay receiver in GPON networks.

**Ref.237330**

**Art.Nr**

UOU1550

**EAN13**

8424450213711

### Highlights

- Stable RF signal output level
- DIN rail or wall installation
- Compact and resistant ABS plastic case, white colour (RAL 9003)

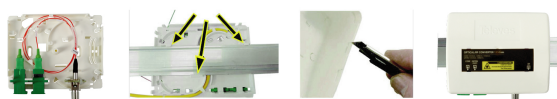
### Main features

- SC/APC optical connectors
- F-type RF connector

### Additional information

(Click to see the picture)

#### Mounting details



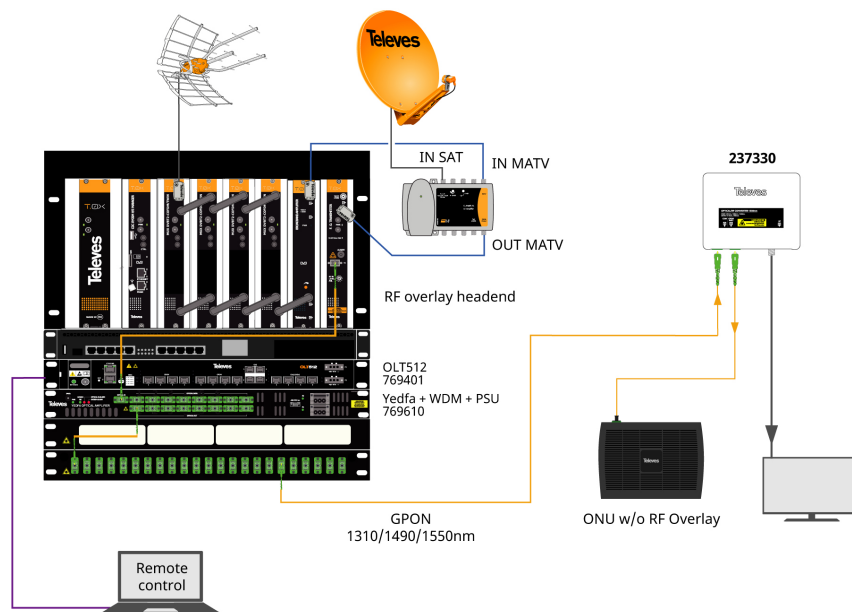
The device has two fixing ways:

- Wall: using the supplied screws
- DIN rail: to use the DIN type anchor, you must remove the pre-cut tabs that holds the cover

Once affixed the device, you must insert the cover above the base and screw it. Afterwards, you will be able to put the definitive identifying label, as well as the protector plastic of the same. On the label, there is a location available for identifying the device or point to which it provides service.

## Application example

(Click to see the picture)



Due to its characteristics, its usefulness as a complement to ONT/ONU modules without RF output.

## Technical specifications

RF Output		
RF connector		F-Female
Bandwidth	MHz	54 - 2400
Impedance	Ohm	75
Flatness	dB	± 2
Output level	dBµV	58 (DTT)
		49 (SAT)
Optical input/output		
Number of ports		1 COM bidirectional 1 GPON bidirectional
Wavelength	nm	1310 & 1490 <> GPON 1310 & 1490 <> COM 1550 < COM
Maximum optical input power	dBm	+2
Minimum optical input power recommended	dBm	-5
Optical return losses	dB	> 40
Optical connectors		SC/APC
Type of optical device		InGaAs pin photodiode
General		
Operating temperature	°C	-5 ... +45
Protection index		IP30