



SFP Transceiver 1000 Base-X, 2 fibers (LC) SM

SFP (Smart Form-Factor Pluggable) transceiver module 1000 Base-X with LC connector that offers the possibility to extend the network up to 10 km through single-mode (SM) dual fiber.

This high performance transceiver can be connected to an SFP input of a device to allow its access to an Ethernet signal through optical fiber.

Ref.	769210
Logical ref.	EKASFP2F
EAN13	8424450167175

Packaging info

Box	1 pcs.
Bucket	29 pcs.

Physical data

Net weight	18.00 g
Gross weight	18.00 g
Width	61.00 mm
Height	13.00 mm
Depth	12.00 mm
Main product weight	18.00 g

Highlights

- Small Form Pluggable (SFP) module
- 2 single-mode fibers (SM)
- Operating data rate of 1250 Mbps

- Duplex LC connector
- Up to 10 km transmission distance
- Differential LVPECL inputs and outputs
- TTL signal detect indicator
- Hot-pluggable capability
- CoaxData Modem (ref. 769202) compatible

Discover

What is a SFP?

The Small Form-Factor Pluggable (SFP) devices are adapters that generate an interface to allow access to an Ethernet signal through Optical Fiber. These devices can be connected to the inputs of different Ethernet and GPON equipment, allowing the transmission/reception of the information by connecting to single-mode or multi-mode fiber or Ethernet cables.

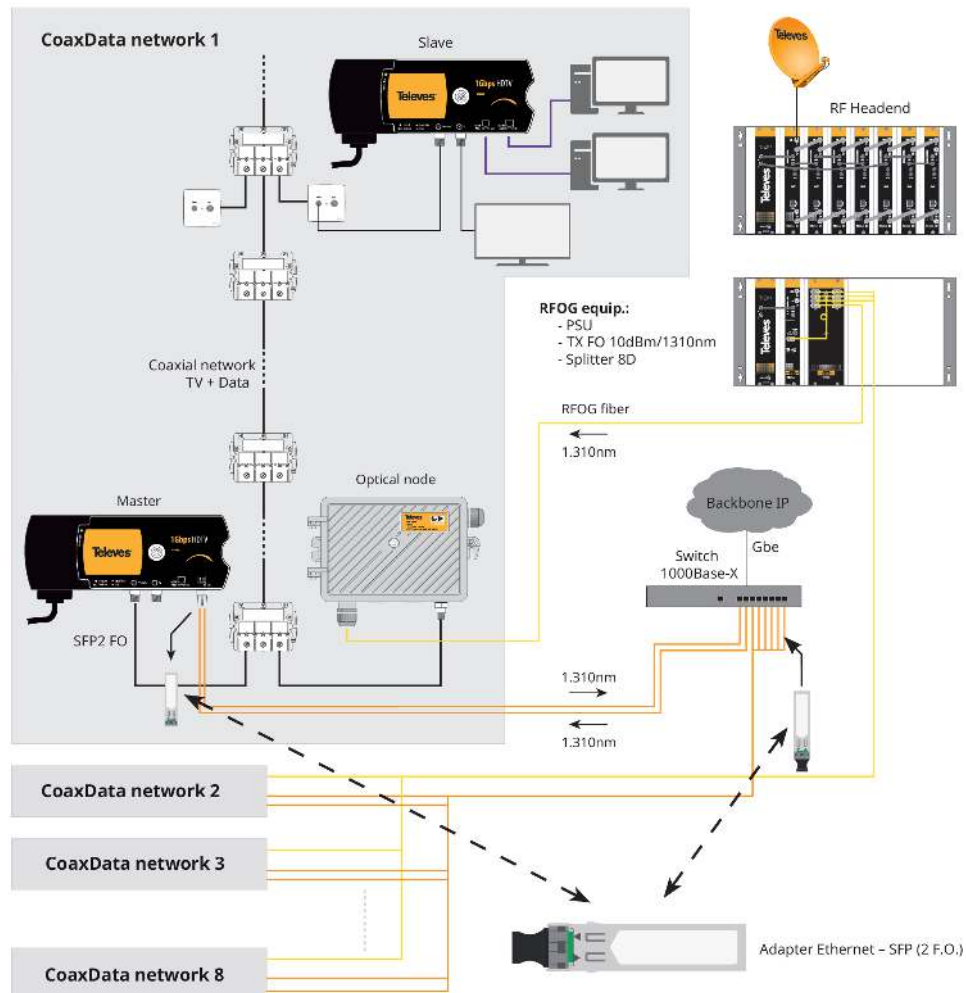
Among the advantages of using SFP modules, we can highlight the reduction of space, lower energy consumption, or the increase of transmission distances.

Which SFP do I need?

Based on the devices to which they are connected, the transmission speed, or the type of cable used, several options are available in the whole range of media converters. The compatibility between the SFPs and the different Ethernet and GPON equipment is described below.

Compatible products	1GbE Transceiver			10GbE Transceiver		1GbE RJ45 Transceiver	ONU	GPON Transceiver	
	769150	769210	769212	769214	769412	769411	769520	769410/13	769414/15
SFP Switches: 768150, 769140, 769141, 769144, 769147, 769152	OK	OK	OK	-	-	-	OK	-	-
SFP+ Switches: 769145, 769146, 769148, 769149, 769151, 769152, 769153	OK	OK	OK	OK	OK	-	OK	-	-
SFP+ Router: 769115	OK	OK	OK	OK	-	-	-	-	-
OLT512EVO: 769403	OK	-	OK	OK	OK	OK	-	OK	OK
OLT3072: 769420, 769421, 769422	-	-	OK	-	OK	OK	-	OK	-
Media converter: 769215	OK	OK	OK	-	-	-	-	-	-
WaveData: 769002	OK	OK	OK	-	-	-	-	-	-

Application example



Technical specifications : Ref. 769210

Transceiver type		SFP
Fiber type		Single-Mode
Transmitter wavelength	nm	1310
Transmitter output power	dBm	-9 ... -3
Optical receiver sensitivity	dBm	-19
Forwarding rate	Mb/s	1250
Transmission distance	km	< 10
Powering	Vdc	3.13 ... 3.46
Operating temperature	°C	-20 ... 60